

# Project update – work continuing at the intersection of Bells Line of Road and Grose Vale Road/Terrace Road, North Richmond

Roads and Maritime Services | April 2018

The Australian and NSW governments are improving traffic conditions at key intersections on approach to Richmond Bridge.

Roads and Maritime Services is delivering this project, which involves improving the intersection of Bells Line of Road/Terrace Road and Grose Vale Road, North Richmond.

The project will improve travel times and traffic flows during peak periods.

## Project progress and next stage

We have surveyed the site, identified the location of utilities, completed some tree removal, carried out demolition work, relocated some utilities and completed all property adjustments. The next stage of work includes:

- more utility relocation work
- installing or improving dedicated turning lanes on all sides of the intersection
- providing two westbound lanes from Pitt Lane to about 90 metres west of Grose Vale Road
- removing 21 parking spaces and relocating bus zones
- installing seven 15 minute parking spaces on the eastbound side of Bells Line of Road.

## Our work schedule

We will be back on site to complete the third stage of work for another **45 night shifts** and **67 day shifts** between **Friday 27 April** and **Tuesday 31 July**, weather permitting.

Our night work hours will be between **7pm** and **7am** from **Sunday** to **Friday**. Our day work hours will be between **7am** and **7pm** from **Monday** to **Friday** and between **8am** and **1pm** on **Saturday**.

The project team will not be on site at all times because of the way we are staging the program of work.

We will not be working public holidays.

We have included a map to show the location of the work.

## How will the work affect you?

Our work may be noisy at times but we will continue to do everything we can to minimise its impact, including completing the noisier tasks by **midnight** and staging them in different locations.

The service road will remain operational during this stage of work and there will be no changes to parking. We will notify the community again of any changes.

## Traffic changes

There will be temporary traffic changes during our work hours to ensure the work zone is safe. Lane closures will be in place and may affect travel times.

In June we will be moving the bus stop to the location indicated in the map of the ultimate design. This move will be temporary and the bus stop will need to be temporarily moved again before we complete the work. We will place signage at the bus stop closer to the date.

Parking conditions in the service road will also change from June, with the number of spaces reducing to seven. The location of the spaces will need to shift during our work to allow us to safely complete the work.

Please keep to the speed limits and follow signs and traffic controllers' directions.

For the latest traffic updates, you can call 132 701, visit [livetraffic.com](http://livetraffic.com) or download the Live Traffic NSW App.

## Thank you

Thank you for your patience during this important work.

### Contact us

If you have any questions or would like to be kept up to date on this work, please contact our delivery partner, DM Roads, on:



1800 332 660



[NSW\\_projects@dmroads.com.au](mailto:NSW_projects@dmroads.com.au)



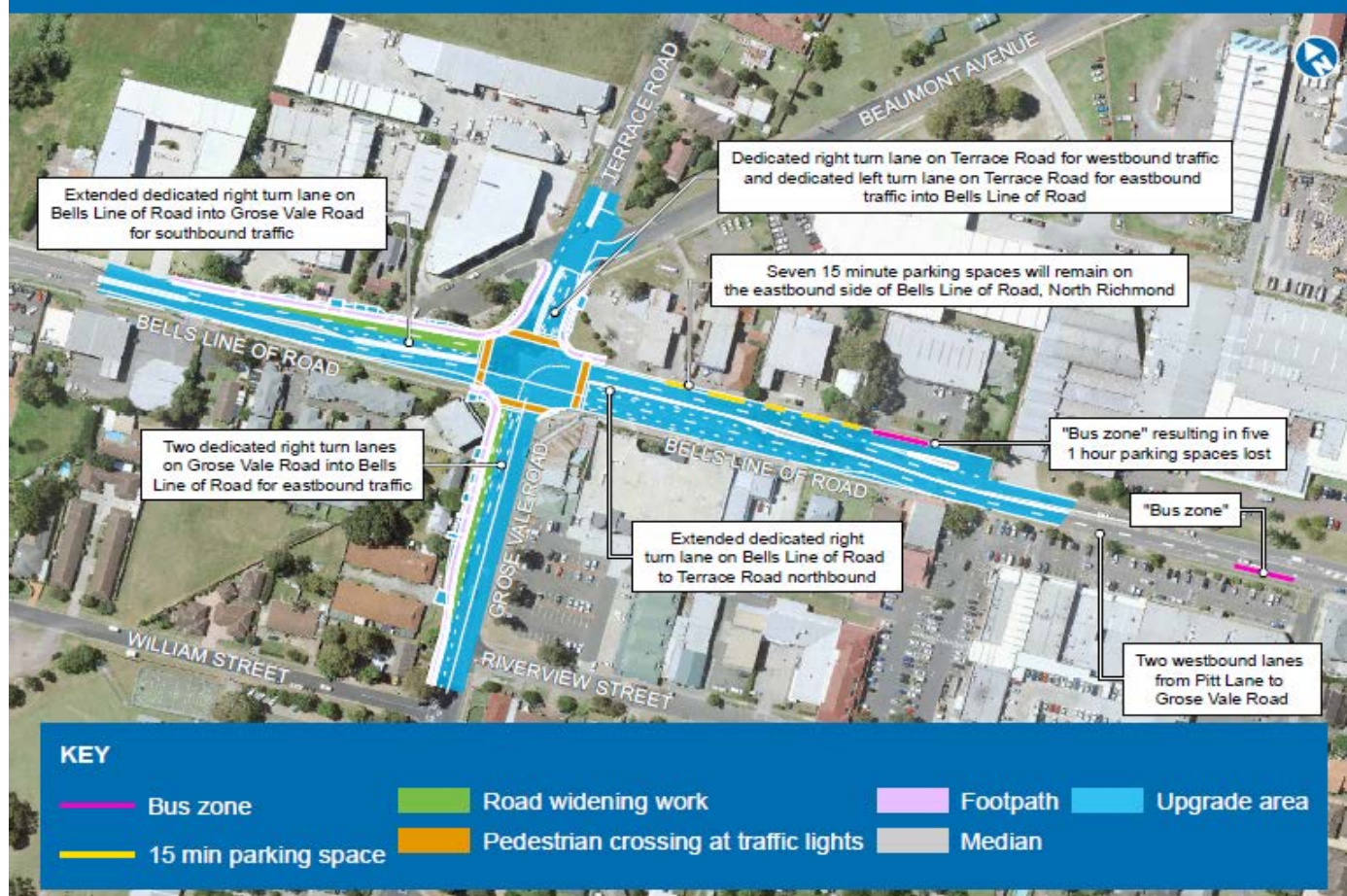
[rms.nsw.gov.au](http://rms.nsw.gov.au)



131 450

If you need help understanding this information, please contact the Translating and Interpreting Service on 131 450 and ask them to call us on 1800 332 660.

### Improvements at the intersection of Grose Vale Road and Bells Line of Road, North Richmond



April 2018  
RMS18.165



Privacy Roads and Maritime Services ("RMS") is subject to the Privacy and Personal Information Protection Act 1998 ("PIIP Act") which requires that we comply with the Information Privacy Principles set out in the PIIP Act. All information in correspondence is collected for the sole purpose of assisting in the delivery of this project. The information received, including names and addresses of respondents, may be published in subsequent documents unless a clear indication is given in the correspondence that all or part of that information is not to be published. Otherwise RMS will only disclose your personal information, without your consent, if authorised by the law. Your personal information will be held by RMS at 27 Argyle Street, Parramatta. You have the right to access and correct the information if you believe that it is incorrect.